



Certificate SGSCH-COC-007456

The Organization

GRAFIQUES MANLLEU, S.A.

Alp, 6 - Pol. Ind. La Coromina – Apdo. Correos 166
08560 Manlleu (Barcelona)
Spain

has been assessed and certified as meeting the requirements of

FSC® Chain-of-Custody

The company was assessed against the following standards:
FSC-STD-40-004 V3-1 - Chain of Custody Certification
FSC-STD-50-001 Requirements for use of the FSC trademarks by Certificate Holders

for the products detailed in the scope below

Compra de papel FSC Mix y FSC Recycled para la impresión offset de etiquetas, catálogos, folletos, libros y calendarios FSC Mix y FSC Recycled por el sistema de transferencia, con posible subcontratación de procesos de acabados.

Purchasing of FSC Mix and FSC Recycled paper to offset printing of FSC Mix and FSC Recycled labels, advertising material, brochures, calendar and books by the transfer system, with possible outsourcing of finished processes.

This certificate is valid from 16 April 2022 until 22 March 2025
and remains valid subject to satisfactory surveillance audits.
Issue 7. Certified since March 2010

Authorised by

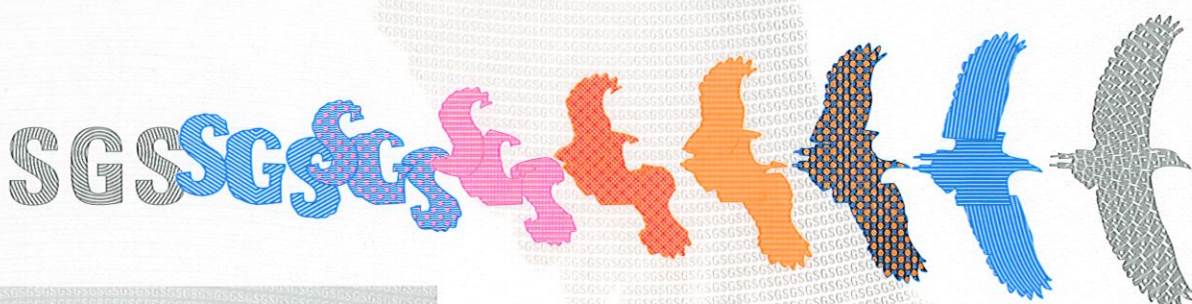
SGS Société Générale de Surveillance SA
1, place des Alpes, 1211 Geneva, Switzerland
t +41 (0)22 739-91-11 f +41 (0)22 739-98-86 www.sgs.com



The mark of responsible forestry

The validity of this certificate shall be verified on <http://info.fsc.org/>
For the full list of product groups covered by the certificate see <http://info.fsc.org/>
This certificate itself does not constitute evidence that a particular product supplied by the certificate holder is FSC-certified (or FSC Controlled Wood). Products offered, shipped or sold by the certificate holder can only be considered covered by the scope of this certificate when the required FSC claim is clearly stated on sales and delivery documents. The certificate remains the property of SGS. The certificates and all copies or reproductions shall be returned or destroyed if requested by SGS.

Page 1 of 1



This document is issued by the Company subject to its General Conditions of Certification Services accessible at www.sgs.com/terms_and_conditions.htm. Attention is drawn to the limitations of liability, indemnification and jurisdictional issues established therein. The authenticity of this document may be verified at <http://www.sgs.com/en/certified-clients-and-products/certified-client-directory>. Any unauthorized alteration, forgery or falsification of the content or appearance of this document is unlawful and offenders may be prosecuted to the fullest extent of the law.